

GIGABIT ETHERNET MAGNETICS



LM00300

- Designed for use with 100/1000Base-T transceiver ICs
- Supports four pairs of category 5 UTP cable
- Maximized for full duplex applications
- Compliant with IEEE 802.3ab
- IR reflow rating at 225° C peak
- 350µH OCL with 8mA bias applied from 0° C to 70° C

ELECTRICAL SPECIFICATIONS AT 25° C

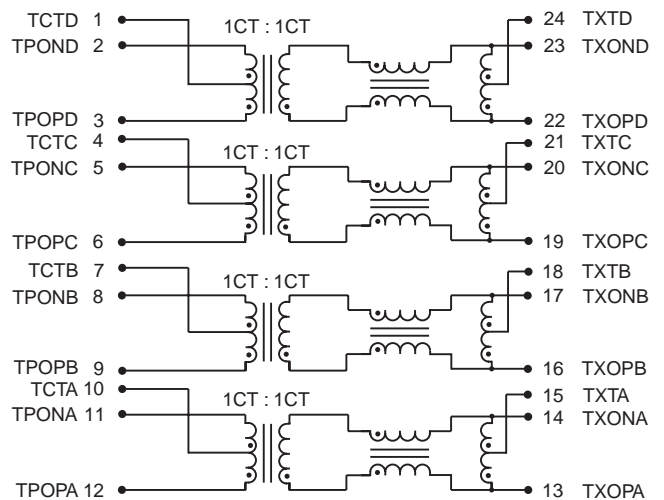
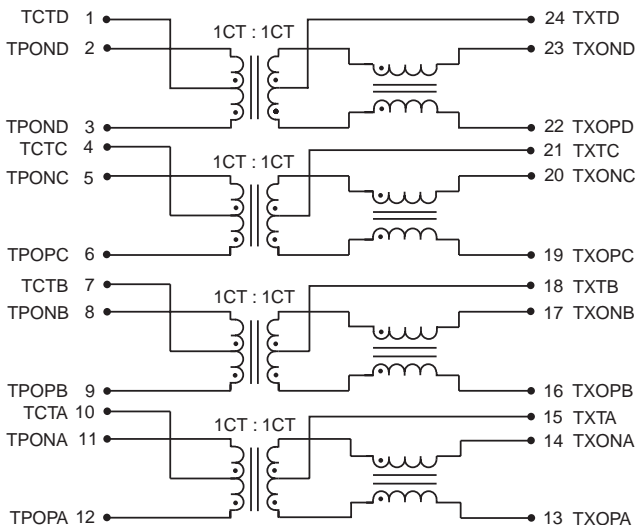
Part Number	Insertion Loss dB max	Return Loss dB min		Common to Common Mode Rejection dB min	Crosstalk dB min	Hipot Vrms min
	0.1MHz to 100MHz	0.5MHz to 40MHz	40MHz to 100MHz	100KHz to 100MHz		
S558-5999-M8	1.0	18	12 - 20 log (f/80 MHz)	30	33 - 20 log (f/50MHz)	1500
S558-5999-M9	1.0	18	12 - 20 log (f/80 MHz)	30	33 - 20 log (f/50MHz)	1500
S558-5999-P3	1.0	18	12 - 20 log (f/80 MHz)	30	33 - 20 log (f/50MHz)	1500
S558-5999-T3	1.0	18	12 - 20 log (f/80 MHz)	30	33 - 20 log (f/100MHz)	1500
S558-5999-T4	1.0	18	12 - 20 log (f/80 MHz)	30	33 - 20 log (f/100MHz)	1500

To select part number based on transceiver IC compatibility, please contact Bel.

SCHEMATICS

S558-5999-M8
S558-5999-M9
S558-5999-T4

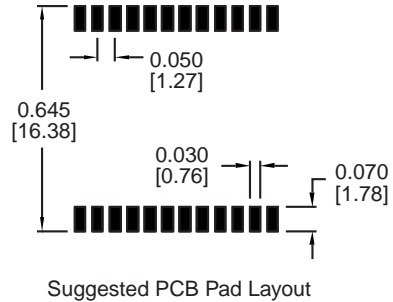
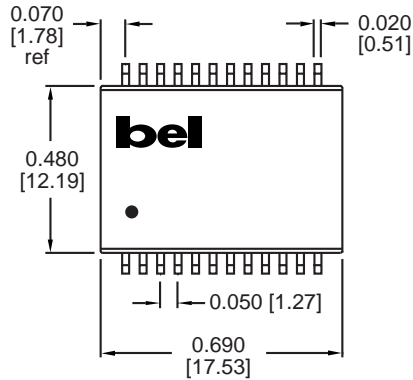
S558-5999-P3
S558-5999-T3



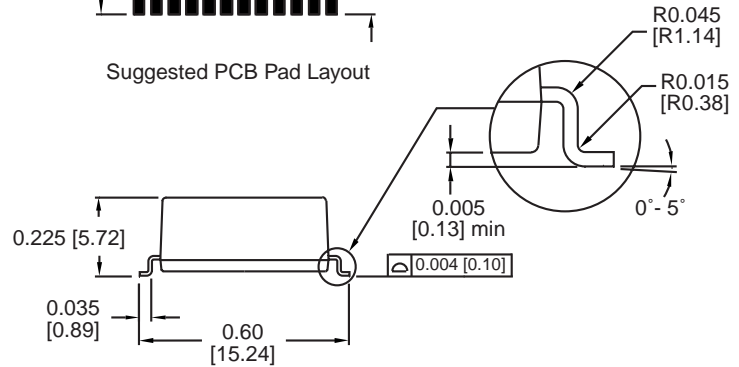
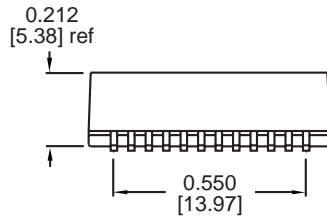
©2000 Bel Fuse Inc. Specifications subject to change without notice. 01.00

LM00300

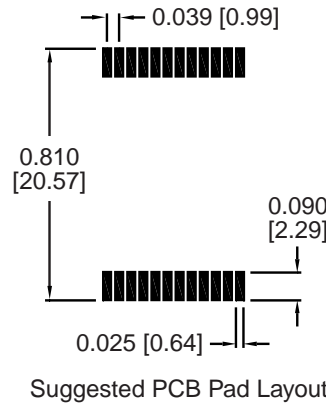
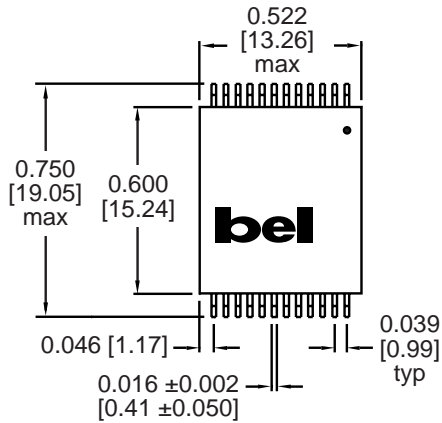
MECHANICALS



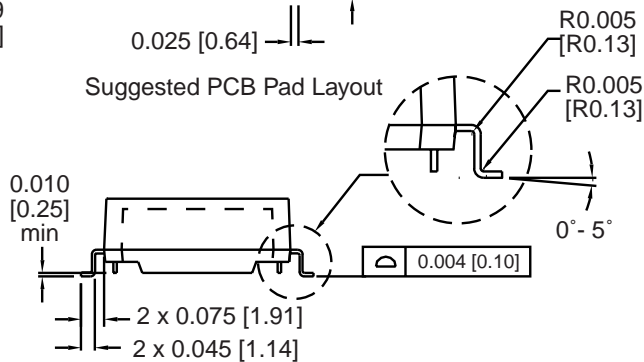
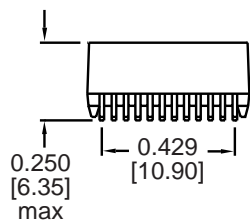
S558-5999-M8
S558-5999-M9
S558-5999-P3



Dimensions are in inches [millimeters].
 Standard dimension tolerance is ± 0.005 [0.13] unless otherwise noted.



S558-5999-T3
S558-5999-T4



©2000 Bel Fuse Inc. Specifications subject to change without notice. 01.00

CORPORATE

Bel Fuse Inc.
 198 Van Vorst Street
 Jersey City, NJ 07302
 Tel 201-432-0463
 Fax 201-432-9542
 www.belfuse.com

FAR EAST

Bel Fuse Ltd.
 8F / 8 Luk Hop Street
 San Po Kong
 Kowloon, Hong Kong
 Tel 852-2328-5515
 Fax 852-2352-3706
 www.belfuse.com

EUROPE

Bel Fuse Europe Ltd.
 Preston Technology Management Centre
 Marsh Lane, Suite F23, Preston
 Lancashire, PR1 8UD, U.K.
 Tel 44-1772-556601
 Fax 44-1772-888366
 www.belfuse.com